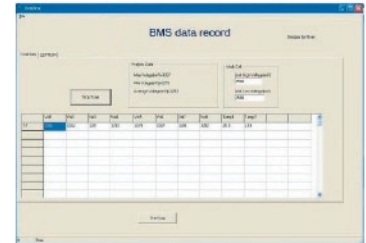


High power density starter battery system

Features

- Up to 30 start-cycles of a 2000KVA generator
- Replaces 24V / 200Ah lead acid starter battery
- Built in charger keeps battery to 100% SOC
- 1/5 weight and 1/3 size of lead acid batteries
- Maintenance free 10 years life time
- Remote battery monitoring system for pre-alert (optional)
- Environmentally friendly



Computer Diagnostics



Example:
Starting a 2000KVA Diesel
Generator



Data Box - Data Transmission
by wire or wireless

Specifications

Battery

- Nominal voltage 24V
- Capacity 48Ah
- Peak output power 20KW
- Discharge current 960A max.
- Discharge current 1440A peak
- Operating temperature range -20 to +45°C

Automatic-Charger

- Input voltage 110-240VAC / 50-60Hz
- Charge current 1A

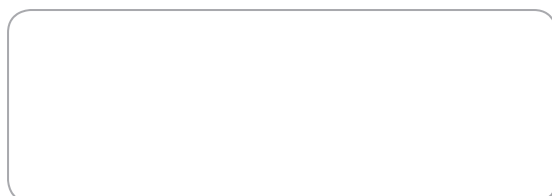
Dataport

- Battery status & MNS data
- Ethernet port (optional)
- GPRS transmission (optional)

Packing

- Dimension (LxWxH) 595x155x245mm
- Weight 28.5 Kg
- Gold plated terminals - M8

Available from:



RIPEnergy®

The power conversion company

RIPEnergy AG
Talstrasse 2
CH-8702 Zollikon
Switzerland

Ph +41-(0)43-818 53 85
Fax +41-(0)43-818 53 87
www.ripenergy.ch