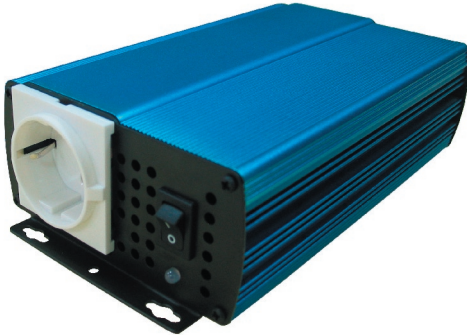


Pure Sinewave Inverter 150W

RoHS Compliant
Directive 2002/95/EC



Benefits



Pure sinewave



Remote ON/OFF



High frequency technology



Light weight perfect for vehicles



Multiple electronic protection



Convection cooling (no fan)

Applications

- Telecom Power Plants
- Marine & other rugged environments
- Electric Utilities and Substations
- Base Station Power
- Industrial Controls
- Solar Home Systems
- Fuel Cell Applications
- Solar / Alternative Power Systems
- Emergency Power Backup (UPS)
- Pleasure and holidays
- Development aid

Sinewave Inverter

Mistral PS-150W

Description

The model Mistral PS-150W pure sinewave inverter supplies a 230VAC output voltage either from a 12V or 24VDC power source.

The shape of the output voltage is pure sinewave - as from the grid.

All new High Frequency Switching Design offers high power and reliability in a compact package and light weight.

Extra input and output filtering reduce EMI to extremely low levels.

Reliability features include an input fuse, thermal shutdown, current limiting and output short circuit shutdown with automatic recovery.

The input and output is fully isolated.

Features

- Fanless design
- Fully isolated design
- Outstanding efficiency at full load
- Pure and fast regulated sinewave output
- LED indicator
- Over-temperature shutdown
- Short circuit protection
- Low input voltage protection
- Softstart
- Remote ON/OFF with external switch
- 24 month parts and labour warranty

Specifications (Specifications Subject to Change Without Notice)

Electrical (output)

Nominal VAC	230 +/- 3%
Output Frequency	50Hz +/- 0.5%
Nominal power	150W continuous
Nominal current	0.65A (230VAC @ nominal Power)
Output Waveform	Pure Sinewave < THD 2%
Protection circuitry	Short circuit Overload Over temperature

Environmental Specifications

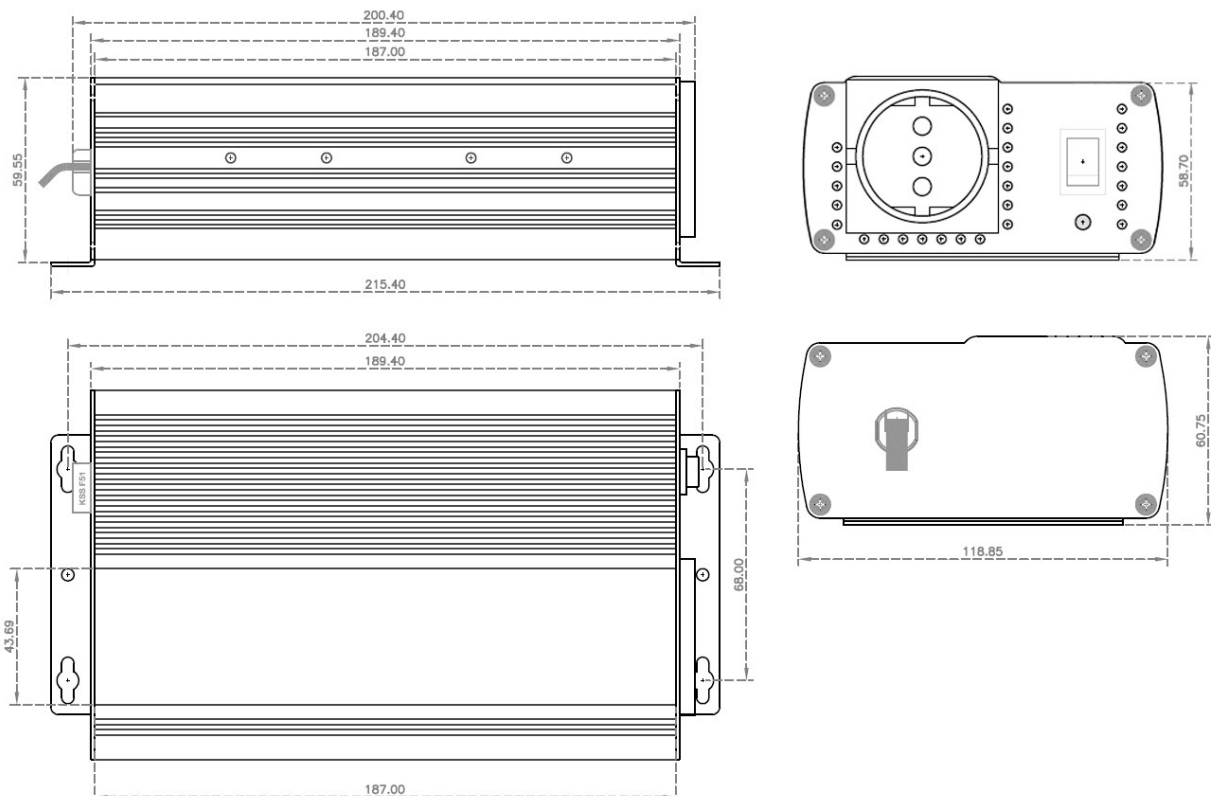
Operating Temp. Range	-20° to +40°C >60°C shutdown Derating Linearly from 40°C
Humidity	0 - 95% Relative Humidity (non-condensing)
Audible Noise	Scarcely audible @ 1m (fanless design)

Electrical (input)

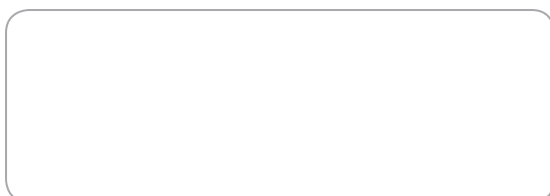
Nominal voltage (VDC)	12	24
Voltage range (VDC)	10 - 15.5	20 - 31
Current @ Pnom (A)	15	7.5
Protection circuitry	Overvoltage Low voltage	
Idle current 230V On (A)	0.4	0.3
Idle current 230V Off (uA)	< 3	< 2
Efficiency max.	> 88%	> 90%

Mechanical Specifications

Length	216 mm
Width	119 mm
Height	61 mm
Degree of protection	IP 20
Clearance	2.5 cm all around
Material	Aluminium
Finish	Black Anodize / Powder Epoxy Coat
Weight	1.1 Kg
Connections	Input: 12V DC-Car-Plug, 24V DC-cable Output: SCHUKO outlet
Warranty	2 years
Standards	Approval to CE



Available from:



RIPEnergy®

The power conversion company

RIPEnergy AG
Wägitalstrasse 24
CH-8854 Siebnen
Switzerland

Ph +41-(0)43-818 53 85
Fax +41-(0)43-818 53 87
www.ripenergy.ch