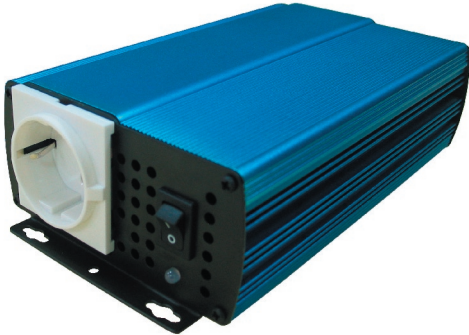


# Pure Sinewave Inverter 200W

RoHS Compliant  
Directive 2002/95/EC



## Benefits



Pure sinewave



Remote ON/OFF



High frequency technology



Light weight perfect for vehicles



Multiple electronic protection

## Applications

- Telecom Power Plants
- Marine & other rugged environments
- Electric Utilities and Substations
- Base Station Power
- Industrial Controls
- Solar Home Systems
- Fuel Cell Applications
- Solar / Alternative Power Systems
- Emergency Power Backup (UPS)
- Pleasure and holidays
- Development aid

# Sinewave Inverter

Mistral PS-200W

## Description

The model Mistral PS-200W pure sinewave inverter supplies a 230VAC output voltage either from a 12V or 24VDC power source.

The shape of the output voltage is pure sinewave - as from the grid.

All new High Frequency Switching Design offers high power and reliability in a compact package and light weight.

Extra input and output filtering reduce EMI to extremely low levels.

Reliability features include an input fuse, thermal shutdown, current limiting and output short circuit shutdown with automatic recovery.

The input and output is fully isolated.

## Features

- Fully isolated design
- Outstanding efficiency at full load
- Pure and fast regulated sinewave output
- LED indicator
- Over-temperature shutdown
- Short circuit protection
- Low input voltage protection
- Softstart
- Remote ON/OFF with external switch
- 24 month parts and labour warranty

# Specifications ( Specifications Subject to Change Without Notice)

## Electrical (output)

|                             |  |
|-----------------------------|--|
| <b>Nominal VAC</b>          | 230 +/- 3%                                   |
| <b>Output Frequency</b>     | 50Hz +/- 0.5%                                |
| <b>Nominal power</b>        | 200W continuous                              |
| <b>Nominal current</b>      | 0.87A (230VAC @ nominal Power)               |
| <b>Output Waveform</b>      | Pure Sinewave THD < 2%                       |
| <b>Protection circuitry</b> | Short circuit<br>Overload<br>Overtemperature |

## Electrical (input)

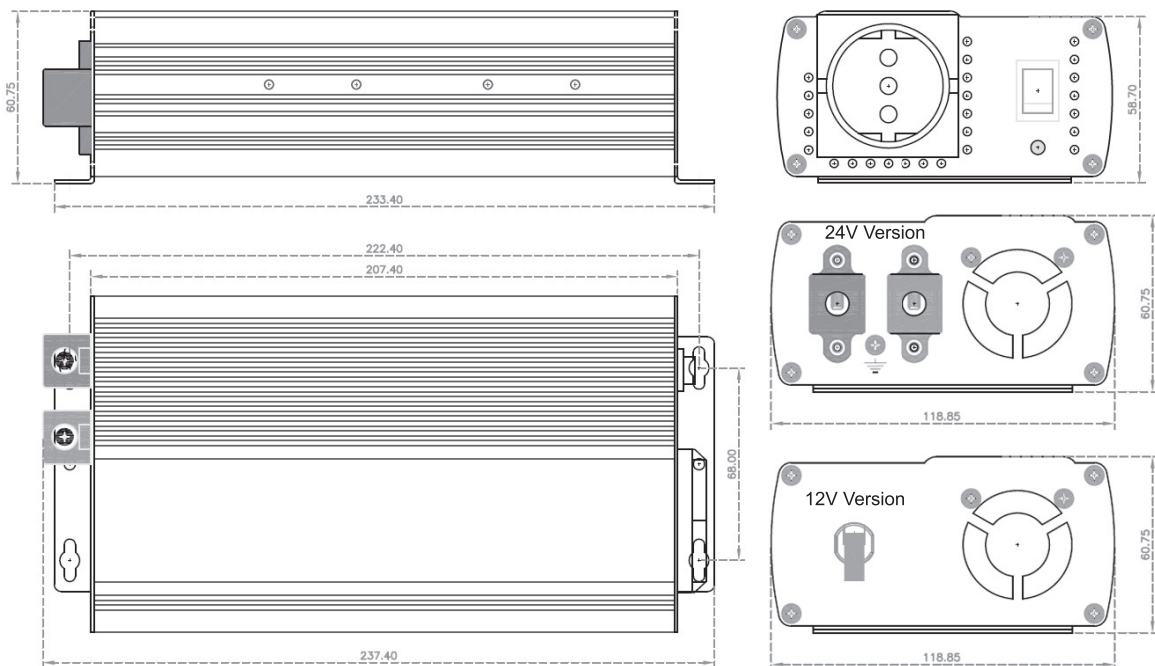
|                                   |                            |         |
|-----------------------------------|----------------------------|---------|
| <b>Nominal voltage (VDC)</b>      | 12                         | 24      |
| <b>Voltage range (VDC)</b>        | 10 - 15.5                  | 20 - 31 |
| <b>Current @ Pnom (A)</b>         | 20                         | 10      |
| <b>Protection circuitry</b>       | Overvoltage<br>Low voltage |         |
| <b>Idle current 230V On (A)</b>   | 0.55                       | 0.3     |
| <b>Idle current 230V Off (uA)</b> | < 3                        | < 2     |
| <b>Efficiency max.</b>            | >88%                       | >90%    |

## Environmental Specifications

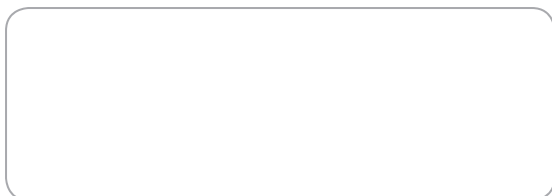
|                              |   |
|------------------------------|---|
| <b>Operating Temp. Range</b> | -20° to +40°C >60°C shutdown<br>Derating Linearly from 40°C |
| <b>Humidity</b>              | 0 - 95% Relative Humidity (non-condensing)                  |
| <b>Audible Noise</b>         | Scarcely audible @ 1m (fan off)                             |
| <b>Fan</b>                   | Temperature controlled                                      |

## Mechanical Specifications

|                             |   |
|-----------------------------|---|
| <b>Length</b>               | 238 mm  |
| <b>Width</b>                | 119 mm  |
| <b>Height</b>               | 61 mm   |
| <b>Degree of protection</b> | IP 20 (conformal coating optional)                            |
| <b>Clearance</b>            | 2.5 cm all around   |
| <b>Material</b>             | Aluminium   |
| <b>Finish</b>               | Black Anodize / Powder Epoxy Coat                             |
| <b>Weight</b>               | 1.3 Kg  |
| <b>Connections</b>          | Input: 12V DC-Car-Plug, 24V DC-cable<br>Output: SCHUKO outlet |
| <b>Warranty</b>             | 2 years   |
| <b>Standards</b>            | Approval to CE  |



Available from:



# RIPEnergy®

The power conversion company

RIPEnergy AG  
Wägitalstrasse 24  
CH-8854 Siebnen  
Switzerland

Ph +41-(0)43-818 53 85  
Fax +41-(0)43-818 53 87  
www.ripenergy.ch